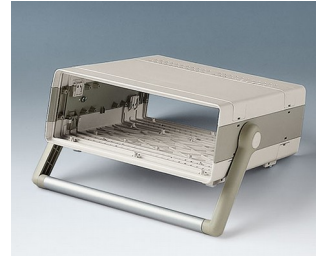


# HANDLE BAR, BAIL ARM

Tilt and swivel carry handle bars made of plastic and diecast zinc. With matching anodised aluminium profile, cut to the correct width for your enclosure, and supplied as a separate component.



## Customising Options

What do you still need for your own very personal product? We can supply enclosures and tuning knobs with all necessary modifications for fitting your electronic components.  
Customising options for Handle bar, bail arm



Printing

# HANDLE BAR, BAIL ARM

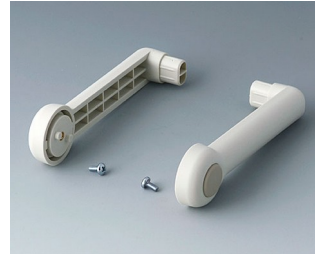
## Select Versions



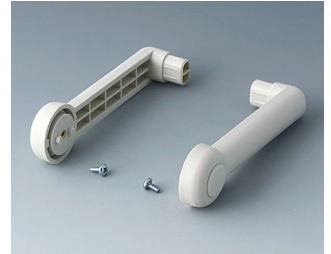
**A9300014**  
Side arm kit  
Zinc  
off-white RAL 9002



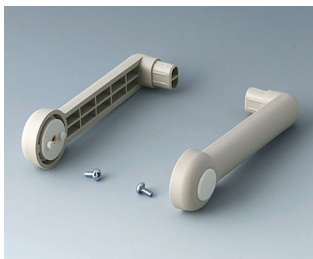
**A9300015**  
Side arm kit  
PA 6 (UL 94 HB)  
black RAL 9005



**A9300016**  
Side arm kit  
PA 6  
off-white RAL 9002



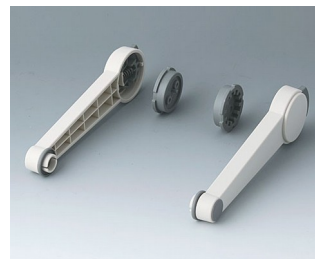
**A9300017**  
Side arm kit  
PA 6  
off-white RAL 9002



**A9300018**  
Side arm kit  
PA 6  
pebble grey RAL 7032



**A9300522**  
Side arm kit  
PA 6 (UL 94 HB)  
black RAL 9005



**A9300722**  
Side arm kit  
PA 6  
off-white RAL 9002



**A9300822**  
Side arm kit  
PA 6  
light grey RAL 7035

Subject to technical modification without notice. © by OKW Gehäusesysteme, Buchen/Germany.