

## Handheld enclosures modelled for the hand

Inspired by the touch sensation, the design of the BLOB family of plastic enclosures is entirely focused on the needs of the user.

- high level of practical value thanks to a convincing touch sensation; the user's hands intuitively grasp the enclosure in the correct way
- **\* iF product design award 2014 | German Design Award 2015 \***
- the enclosures are designed to provide an natural grasp position which guides the operator's hands to the controls
- gentle and at the same time rugged
- huge number of possible applications
- 3 types
- **UNIT** – for single handed operation with keypad area and grip
- **CONTROL** – can be held with one hand and operated with the other. Separate keypad, activation and grip areas
- **PANEL** – for handheld or desktop use. With keypad, activation and two grip areas
- battery clips and ø 12-23 mm button cells can be accommodated
- cable glands can be fitted at any position on the circumference of the enclosure
- recessed operating area for protecting the membrane keypad or decorative foil/label
- ABS (UL 94 HB), two colours
- optional IP 54 sealing kit
- internal screw pillars for PCBs

## Designer Statement

"'Wow, this fits your hand perfectly!'", was the first comment on this mobile product with universal design. The intelligent form of BLOB was created by optimising ergonomic requirements. Whether young or old, everyone should be able to use these handheld enclosures intuitively. They are also flexible enough to accommodate a wide variety of applications and needs of the user. Where does the name come from? From architecture: Blob stands for 'Binary Large OBject', a teardrop-shaped connection that can be formed in an unlimited number of ways."

Martin Nußberger, polyform Industrie Design

# BLOB



# BLOB

## Applications and Examples

Following the principles of “Universal Design”, BLOB supports applications that are flexible enough to meet the needs of a large number of people with different hand sizes and grasping volumes. Many different kinds of user-oriented applications, wireless or with cable. As self-sufficient or complementary units, or in a network with other equipment.

- Diagnostics
- Therapy
- Laboratory
- Industry
- Office
- Household
- Leisure time



Biofeedback through vibration



HAUX Patient Entertainment remote control



Manual control for gentle colonoscopy



Registration system for kindergartens



RoyalGPS for precise position detection

## Customising Options

What do you still need for your own very personal product? We can supply enclosures and tuning knobs with all necessary modifications for fitting your electronic components.  
Customising options for Blob

# BLOB



Machining



Lacquering



Printing



Laser marking



Decor foils



Special material



EMC shielding



Installation / Assembly  
of accessories

## Select Versions



**B2510107**  
BLOB UNIT  
ABS (UL 94 HB)  
off-white RAL 9002  
130x60x30mm  
IP 54 opt.



**B2510108**  
BLOB UNIT  
ABS (UL 94 HB)  
lava  
130x60x30mm  
IP 54 opt.



**B2512107**  
BLOB CONTROL  
ABS (UL 94 HB)  
off-white RAL 9002  
114x76x31mm  
IP 54 opt.



**B2512108**  
BLOB CONTROL  
ABS (UL 94 HB)  
lava  
114x76x31mm  
IP 54 opt.



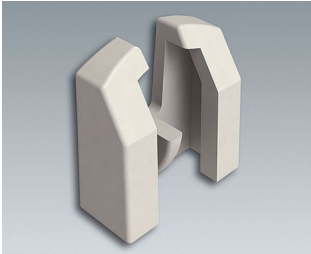
**B2514107**  
BLOB PANEL  
ABS (UL 94 HB)  
off-white RAL 9002  
200x165x36mm  
IP 54 opt.



**B2514108**  
BLOB PANEL  
ABS (UL 94 HB)  
lava  
200x165x36mm  
IP 54 opt.

# BLOB

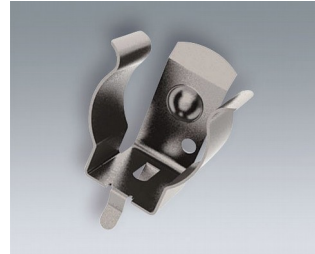
## Accessory "battery"



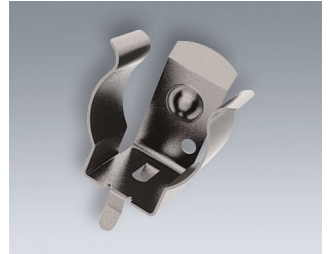
**A9193033**  
Polarity reversal protection  
device, positive terminal AA  
ABS (UL 94 HB)  
off-white RAL 9002



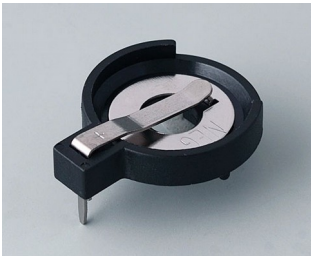
**A9193034**  
Polarity reversal protection  
device, positive terminal AAA  
ABS (UL 94 HB)  
off-white RAL 9002



**A9193035**  
Battery clip, AA  
Steel  
nickel-plated



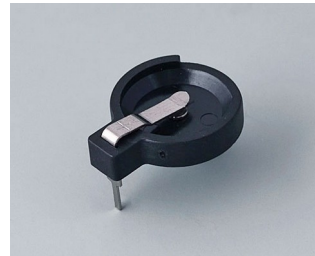
**A9193036**  
Battery clip, AAA  
Steel  
nickel-plated



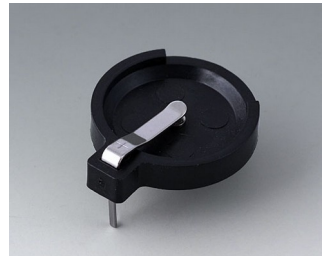
**A9193037**  
Button cell holder, Ø 20 mm



**A9193038**  
Button cell holder, Ø 23 mm



**A9193039**  
Button cell holder, Ø 12 mm

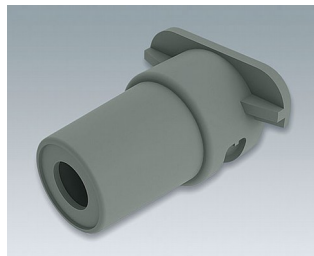


**A9193040**  
Button cell holder, Ø 16 mm

## Accessory "protection"



**B2610001**  
Sealing Unit



**B2610101**  
Cable strain, 5.0 - 5.9  
TPE  
volcano



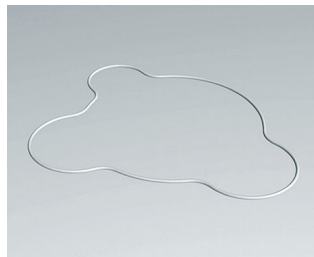
**B2610111**  
Cable strain, 4.2 - 5.0  
TPE  
volcano



**B2610121**  
Cable strain, 3.4 - 4.2  
TPE  
volcano



**B2612001**  
Sealing Control



**B2614001**  
Sealing Panel

# BLOB

## Accessory "screws"



A0305031  
Self-tapping screws 2.5 x 6 mm  
(PZ1)



A0399T10  
Torx T10 screwdriver

Subject to technical modification without notice. © by OKW Gehäusesysteme, Buchen/Germany.