

DATEC-CONTROL

Handheld enclosures for large graphics displays

These ergonomic plastic enclosures have a large head section for installing bigger display modules with graphics capability.

- installation of standard size LCDs and graphics display modules
- narrow holding area for user comfort
- high protection class: IP 65 (XS, S) or IP 54 (M, L) when using the sealing kits and display windows (accessories)
- four sizes each in two colours
- **DATEC-CONTROL XS**
with/without screw-in battery cradles, 2 x AA, 3 x AA / 1 x 9 V cells; battery lid optionally with latch and/or fixed by screws; station for ergonomically inclined desk case applications
- **DATEC-CONTROL S**
with/without screw-in battery cradles, 4 x AA / 1 x 9 V cells; battery lid optionally with latch and/or fixed by screws; station for ergonomically inclined desk case applications
- **DATEC-CONTROL M, L**
with/without plug-in battery packs, up to 5 x AA cells; with mounting for PCMCIA holders; separate desk and wall stations for battery charging and/or data downloading
- easy transmission of data and charging current, station and contacts as accessories
- wall suspension element for secure storage of the enclosure (accessory)
- protectors absorb impacts and protect surfaces, sizes M and L additional with shoulder strap
- recessed operating area for protecting the membrane keypad
- internal fastening pillars for PCBs



DATEC-CONTROL

Applications and Examples

Mobile data collection and transfer via modem, ISDN or infra-red technology, measuring and control technology, digital control devices, medical and wellness equipment, smart factory, industry 4.0, etc.



BIOFIT test unit for eye frequency



Hand-held measuring device for soil and water



Mobile balance display unit in a football stadium



Mobile HMI Terminal



Modular measuring system for universal use



Pretension tester for V-belts and toothed belts

Customising Options

What do you still need for your own very personal product? We can supply enclosures and tuning knobs with all necessary modifications for fitting your electronic components.

Customising options for Datec-Control



Machining



Lacquering



Printing



Laser marking



Decor foils



Special material



EMC shielding



Installation / Assembly of accessories

DATEC-CONTROL

Select Versions



A9076107
DATEC-CONTROL XS, Vers. I
ABS (UL 94 HB)
off-white RAL 9002
200x94x39.5mm
IP 65 opt.



A9076109
DATEC-CONTROL XS, Vers. I
ABS (UL 94 HB)
black RAL 9005
200x94x39.5mm
IP 65 opt.



A9076157
SET: DATEC-CONTROL XS,
Vers. I, station..
ABS (UL 94 HB)
off-white RAL 9002
200x94mm
IP 65 opt.



A9076159
SET: DATEC-CONTROL XS,
Vers. I, station..
ABS (UL 94 HB)
black RAL 9005
200x94mm
IP 65 opt.



A9076207
DATEC-CONTROL XS, Vers. II
ABS (UL 94 HB)
off-white RAL 9002
200x94x39.5mm
IP 65 opt.



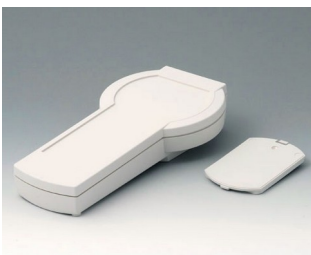
A9076209
DATEC-CONTROL XS, Vers. II
ABS (UL 94 HB)
black RAL 9005
200x94x40mm
IP 65 opt.



A9076257
SET: DATEC-CONTROL XS,
Vers. II, station..
ABS (UL 94 HB)
off-white RAL 9002
200x94mm
IP 65 opt.



A9076259
SET: DATEC-CONTROL XS,
Vers. II, station..
ABS (UL 94 HB)
black RAL 9005
200x94mm
IP 65 opt.



A9077107
DATEC-CONTROL S, Vers. I
ABS (UL 94 HB)
off-white RAL 9002
228x117x47mm
IP 65 opt.



A9077109
DATEC-CONTROL S, Vers. I
ABS (UL 94 HB)
black RAL 9005
228x117x47mm
IP 65 opt.



A9077157
SET: DATEC-CONTROL S, Vers.
I, station..
ABS (UL 94 HB)
off-white RAL 9002
228x117mm
IP 65 opt.



A9077159
SET: DATEC-CONTROL S, Vers.
I, station..
ABS (UL 94 HB)
black RAL 9005
228x117mm
IP 65 opt.

DATEC-CONTROL



A9077207
DATEC-CONTROL S, Vers. II
ABS (UL 94 HB)
off-white RAL 9002
228x117x47mm
IP 65 opt.



A9077209
DATEC-CONTROL S, Vers. II
ABS (UL 94 HB)
black RAL 9005
228x117x47mm
IP 65 opt.



A9077257
SET: DATEC-CONTROL S, Vers. II, station..
ABS (UL 94 HB)
off-white RAL 9002
228x117mm
IP 65 opt.



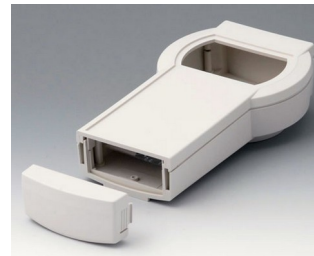
A9077259
SET: DATEC-CONTROL S, Vers. II, station..
ABS (UL 94 HB)
black RAL 9005
228x117mm
IP 65 opt.



A9078107
DATEC-CONTROL M, Vers. I
ABS (UL 94 HB)
off-white RAL 9002
243x130x60mm
IP 54 opt.



A9078109
DATEC-CONTROL M, Vers. I
ABS (UL 94 HB)
black RAL 9005
243x130x60mm
IP 54 opt.



A9078207
DATEC-CONTROL M, Vers. II
ABS (UL 94 HB)
off-white RAL 9002
243x130x60mm
IP 54 opt.



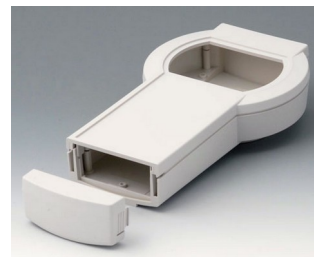
A9078209
DATEC-CONTROL M, Vers. II
ABS (UL 94 HB)
black RAL 9005
243x130x60mm
IP 54 opt.



A9079107
DATEC-CONTROL L, Vers. I
ABS (UL 94 HB)
off-white RAL 9002
266x144x60mm
IP 54 opt.



A9079109
DATEC-CONTROL L, Vers. I
ABS (UL 94 HB)
black RAL 9005
266x144x60mm
IP 54 opt.



A9079207
DATEC-CONTROL L, Vers. II
ABS (UL 94 HB)
off-white RAL 9002
266x144x60mm
IP 54 opt.



A9079209
DATEC-CONTROL L, Vers. II
ABS (UL 94 HB)
black RAL 9005
266x144x60mm
IP 54 opt.



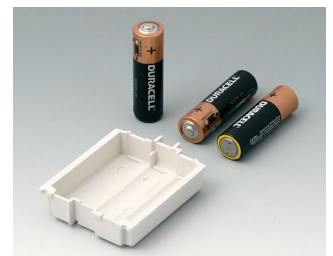
A9176128
Battery compartment XS, 2 x AA
or 1 x 9V
ABS (UL 94 HB)



A9176137
Station XS
ABS (UL 94 HB)
off-white RAL 9002



A9176139
Station XS
ABS (UL 94 HB)
black RAL 9005



A9176158
Battery compartment XS, 3 x AA
ABS (UL 94 HB)
off-white RAL 9002

DATEC-CONTROL



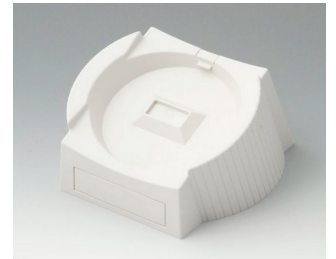
A9177137
Station S
ABS (UL 94 HB)
off-white RAL 9002



A9177139
Station S
ABS (UL 94 HB)
black RAL 9005



A9177310
Battery compartment, 1 x 9 V
ABS (UL 94 HB)



A9178137
Station, Vers. I
ABS (UL 94 HB)
off-white RAL 9002



A9178139
Station, Vers. I
ABS (UL 94 HB)
black RAL 9005



A9178167
Station, Vers. II
ABS (UL 94 HB)
off-white RAL 9002



A9178169
Station, Vers. II
ABS (UL 94 HB)
black RAL 9005

Accessory "battery"



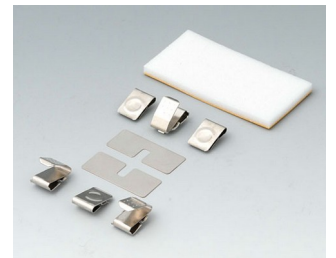
A9160003
Plug-in contact, 1 x 9 V (PP3)



A9174006
Set of battery clips, 1 x 9 V
Steel
tin-plated



A9176007
Set of battery clips, 2 x AA
Steel
nickel-plated



A9176008
Set of battery clips, 3 x AA
Steel
nickel-plated



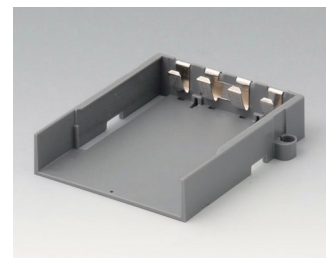
A9176128
Battery compartment XS, 2 x AA
or 1 x 9 V
ABS (UL 94 HB)



A9176158
Battery compartment XS, 3 x AA
ABS (UL 94 HB)
off-white RAL 9002



A9177310
Battery compartment, 1 x 9 V
ABS (UL 94 HB)

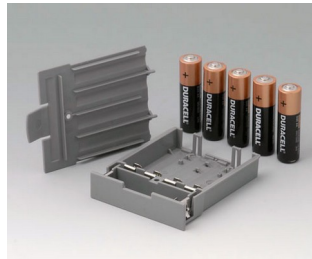


A9178118
Battery compartment holder
PC
volcano

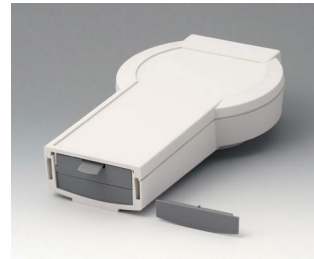
DATEC-CONTROL



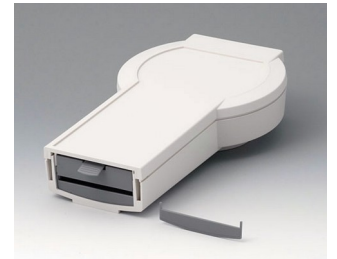
A9178128
Battery compartment, M/L, 4 x AA
PC
volcano



A9178158
Battery compartment, M/L, 5 x AA
PC
volcano



A9178178
End plate for electronic area, Vers. I
PC
volcano



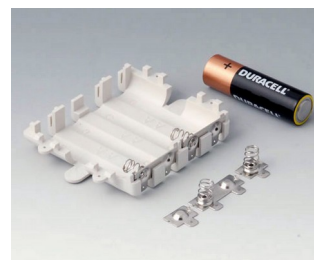
A9178188
End plate for electronic area, Vers. II
PC
volcano



A9178198
End plate for electronic area, Vers. III
PC
volcano



A9250250
Battery spacer
PE foam
50x25x4mm



A9345217
Set of battery compartment, 4 x AA
ABS (UL 94 HB)
off-white RAL 9002

Accessory "station"



A9176137
Station XS
ABS (UL 94 HB)
off-white RAL 9002



A9176139
Station XS
ABS (UL 94 HB)
black RAL 9005



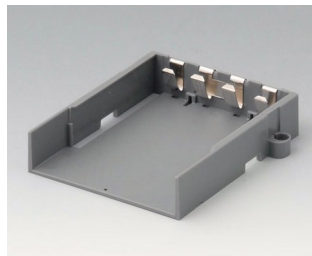
A9177137
Station S
ABS (UL 94 HB)
off-white RAL 9002



A9177139
Station S
ABS (UL 94 HB)
black RAL 9005



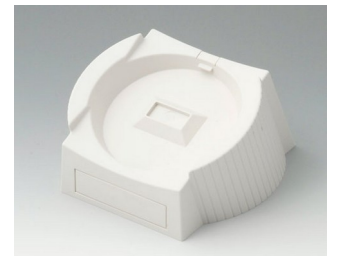
A9178007
Contacts, male
gold-plated



A9178118
Battery compartment holder
PC
volcano

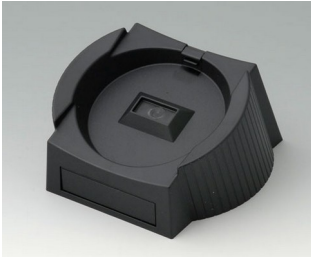


A9178128
Battery compartment, M/L, 4 x AA
PC
volcano

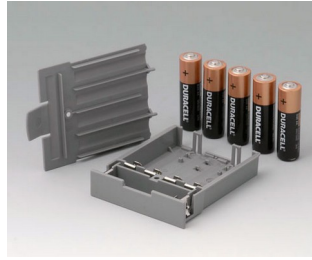


A9178137
Station, Vers. I
ABS (UL 94 HB)
off-white RAL 9002

DATEC-CONTROL



A9178139
 Station, Vers. I
 ABS (UL 94 HB)
 black RAL 9005



A9178158
 Battery compartment, M/L, 5 x
 AA
 PC
 volcano



A9178167
 Station, Vers. II
 ABS (UL 94 HB)
 off-white RAL 9002

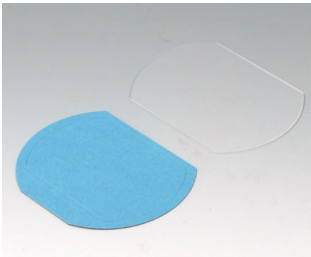


A9178169
 Station, Vers. II
 ABS (UL 94 HB)
 black RAL 9005

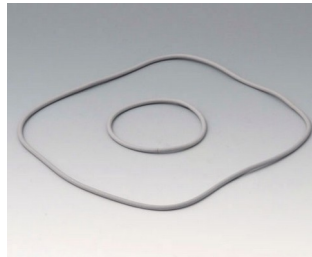


A9199005
 Strain relief
 PA 6
 volcano

Accessory "protection"



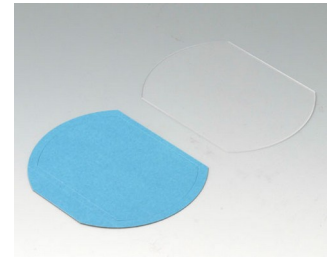
A9176001
 Display window XS
 Acrylic glass
 clear



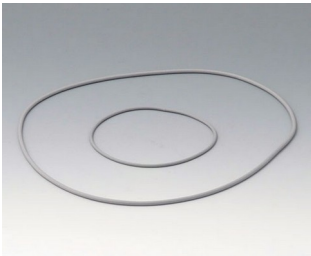
A9176006
 Sealing kit XS



A9176108
 Protector XS
 SBS (TPE)
 volcano



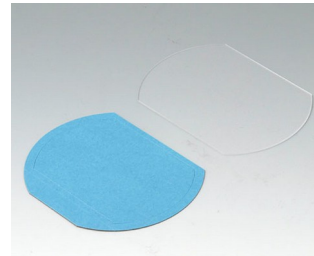
A9177001
 Display window S
 Acrylic glass
 clear



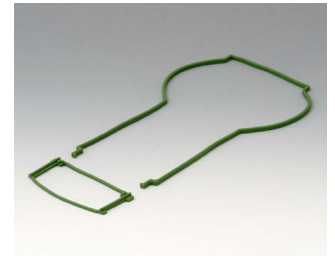
A9177006
 Sealing kit S



A9177008
 Protector S
 SBS (TPE)
 volcano



A9178001
 Display window M
 Acrylic glass
 clear



A9178006
 Sealing kit M

DATEC-CONTROL



A9178108
 Protector M
 SBS (TPE)
 volcano



A9178208
 Protector M
 SBS (TPE)
 volcano



A9179001
 Display window L
 Acrylic glass
 clear



A9179006
 Sealing kit L



A9179108
 Protector L
 SBS (TPE)
 volcano



A9179208
 Protector L
 SEBS (TPE)
 volcano



A9199005
 Strain relief
 PA 6
 volcano

Accessory "wall/holder"



A9226117
 Wall suspension element
 ABS (UL 94 HB)
 off-white RAL 9002



A9226119
 Wall suspension element
 ABS (UL 94 HB)
 black RAL 9005



A9226227
 Wall suspension element
 ABS (UL 94 HB)
 off-white RAL 9002



A9226229
 Wall suspension element
 ABS (UL 94 HB)
 black RAL 9005



A9226337
 Wall suspension element
 ABS (UL 94 HB)
 off-white RAL 9002



A9226339
 Wall suspension element
 ABS (UL 94 HB)
 black RAL 9005

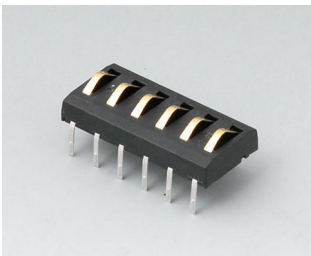
DATEC-CONTROL

Accessory "carrying"

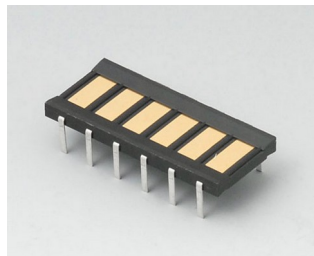


A9100002
Ring eyelet
PA 6
volcano

Accessory



A9178007
Contacts, male
gold-plated



A9178008
Contacts, female
gold-plated

Subject to technical modification without notice. © by OKW Gehäusesysteme, Buchen/Germany.