

STYLE-CASE

Beautiful, highly polished and ergonomic handheld enclosures

OKW presents the STYLE-CASE which has a high gloss surface finish, thus creating another design highlight for modern handheld control units. These elegant eye-catching plastic enclosures fit snugly in the hand and are easy and reliable to operate. The highly polished surface has a very pleasant feel which imparts a high quality and modern user experience.

- high-quality ASA with high UV protection or in PMMA material permeable to infra-red light (Plexiglas)
- glossy surface is easy to clean
- robust, offers protection up to IP 65, sealing kit available as accessory
- assembled by Torx drive stainless steel screws
- recessed operating panel for protecting the membrane keypad / product label
- integrated battery compartment: 2 x 1.5 V AAA (S, M) and 2 x 1.5 V AA (L), set of battery clips supplied as accessories
- attachment pillars for PCBs and components, self-tapping screws for mounting the boards are available as accessories



Customising Options

What do you still need for your own very personal product? We can supply enclosures and tuning knobs with all necessary modifications for fitting your electronic components. Customising options for Style-Case

STYLE-CASE



Machining



Lacquering



Printing / Laser
marking



Decor foils



EMC shielding



Installation / Assembly
of accessories

Select Versions



B2802016
STYLE-CASE S
PMMA (IR) (UL 94 HB)
black RAL 9005
123x48x24mm
IP 40



B2802017
STYLE-CASE S
ASA (UL 94 HB)
traffic white RAL 9016
123x48x24mm
IP 40



B2803016
STYLE-CASE M
PMMA (IR) (UL 94 HB)
black RAL 9005
147x56x27mm
IP 65 opt., IP 40



B2803017
STYLE-CASE M
ASA (UL 94 HB)
traffic white RAL 9016
147x56x27mm
IP 65 opt., IP 40



B2804016
STYLE-CASE L
PMMA (IR) (UL 94 HB)
black RAL 9005
166x64x31mm
IP 65 opt., IP 40



B2804017
STYLE-CASE L
ASA (UL 94 HB)
traffic white RAL 9016
166x64x31mm
IP 65 opt., IP 40



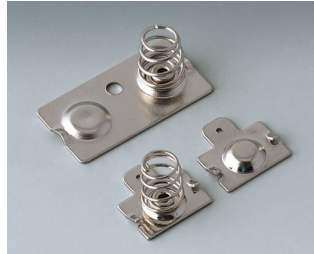
B2804027
STYLE-CASE L
ASA (UL 94 HB)
traffic white RAL 9016
166x64x31mm
IP 65 opt., IP 40

STYLE-CASE

Accessory "battery"



A9190020
 Set of battery clips
 Steel
 nickel-plated

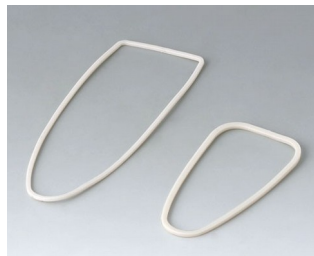


B2904210
 Set of battery clips
 Steel
 nickel-plated

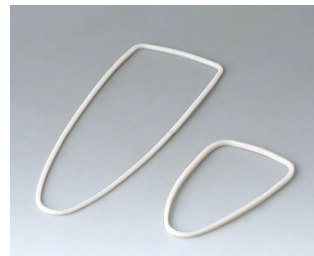
Accessory "protection"



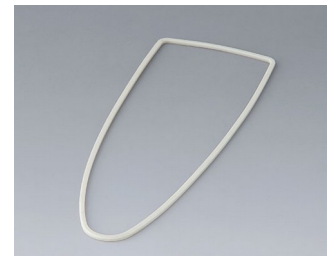
A9199005
 Strain relief
 PA 6
 volcano



B2902111
 Sealing kit S
 TPV 50A



B2903111
 Sealing kit M
 TPV 50A



B2904011
 Sealing L
 TPV 50A



B2904111
 Sealing kit L
 TPV 50A



C2353849
 Flexible cable grommet Ø 5,3
 black

Accessory "wall/holder"



B2902031
 Adhesive foil



B2902037
 Holder S
 ASA (UL 94 HB)
 traffic white RAL 9016



B2902039
 Holder S
 ASA (UL 94 HB)
 black RAL 9005



B2903031
 Adhesive foil

STYLE-CASE



B2903037
Holder M
ASA (UL 94 HB)
traffic white RAL 9016



B2903039
Holder M
ASA (UL 94 HB)
black RAL 9005



B2904031
Adhesive foil



B2904037
Holder L
ASA (UL 94 HB)
traffic white RAL 9016



B2904039
Holder L
ASA (UL 94 HB)
black RAL 9005

Accessory "screws"



A0304031
Self-tapping screws 2.2 x 5 mm
(PZ1)



A0399T10
Torx T10 screwdriver

Subject to technical modification without notice. © by OKW Gehäusesysteme, Buchen/Germany.